



Eyelashes

Eyelash Glue

Nail Tips

Nail Glue

Cosmetic  
Accessories

# Beauty Products

Professional Quality

P.T MIDAS INDONESIA

*Harry & Son's*

# Factories & Exhibition

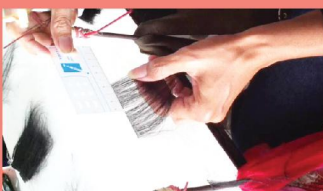
Mr. Harry Hwang, the acting president and owner of Beauty & Beauty Enterprises, an American company located in New York City, established Harry&Son's Inc. In July 1st 2001. With his finest career and acknowledged experience in the field of beauty business, Harry&Son's Inc. has been rapidly organized toward direct supply business as well as distribution. As an evidence of our expanding in size and facilities, We've currently completed our own manufacture plant in Indonesia to provide customers with high quality products at reasonable prices.

**Nails, Eyelashes, Glue, Cosmetic Accessories  
Professional Quality Beauty Products**

*Harry & Sons*

Nail, Eyelash Glue  
Cosmetic Accessories  
Professional Quality Beauty Products

## Process of Making Eyelashes



# Contents

<b>01. LASHON BRAND</b> .....	03
<b>02. REGULAR EYELASHES</b> .....	05
<b>03. FLARE AND INDIVIDUAL EYELASHES</b> .....	09
<b>04. EXTENSION EYELASHES</b> .....	11
<b>05. EYELASH GLUE</b> .....	15
<b>06. NAIL GLUE</b> .....	18
<b>07. NAIL TIPS</b> .....	19
<b>08. DESIGN NAILS</b> .....	21
<b>09. NAIL STICKERS</b> .....	26
<b>10. NAIL FILES</b> .....	27
<b>11. SANDING BLOCK</b> .....	28
<b>12. SPONGES</b> .....	29

# Ultimate Eyelash Collection

Human eyelashes / Eyelash Glue / 3D Faux Mink Eyelashes

LASHON™



## Daily Human Lashes



1262



1263



1277



1281



1282

## 3D Faux Mink Lashes



1402



1408



1418



1420



1423

## Individual Lashes



**Flare Knotted**  
Short, Medium  
Long, Mix



**Flare (knot-free)**  
Short, Medium  
Long, Mix



**Single**  
Short, Medium  
Long, Mix



**Trio**  
Short, Medium  
Long, Mix

## Eyelash Glue



**1g x 3pcs**  
Black / White / Clear



**7g Tube**  
Black / White / Clear



**5g Brush On**  
Black / White / Clear


# Regular

Professional Quality




Experience the uniqueness of eyelashes. It is silk-soft and comfortable. It is so natural and so lightweight it's almost like wearing nothing at all. Various design available made in professional quality.

- SMALL SQUARE CLAMSHELL**
  - Contents : 1 Pair Lash (Glue Option)
  - Size : 73 x 14 x 60 mm



**RECTANGLE CLAMSHELL**

- Contents : 1 Pair Lash (Glue Option)
- Size :
  - A - 55 x 12 x 95 mm
  - B - 50 x 12 x 80 mm



- REGULAR**
  - Contents : 1 Pair Lash (Glue Option)
  - Size : 100 x 25 x 75 mm



- REGULAR W/GLUE**
  - Contents : 1 Pair Lash with Glue
  - Size : 100 x 15 x 95 mm



- ROUND CLAMSHELL P.BOX**
  - Contents : 1 Pair Lash (Glue Option)
  - Size : 83 x 14 x 72 mm

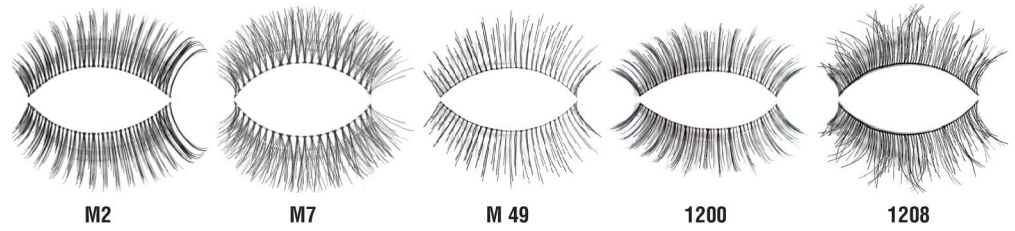


- 5 PAIRS P.BOX**
  - Contents : 5 Pair Lash
  - Size : 82 x 16 x 140 mm
- 2 PAIRS P.BOX W/GLUE**
  - Contents : 2 Pair Lash with Glue
  - Size : 82 x 16 x 98 mm

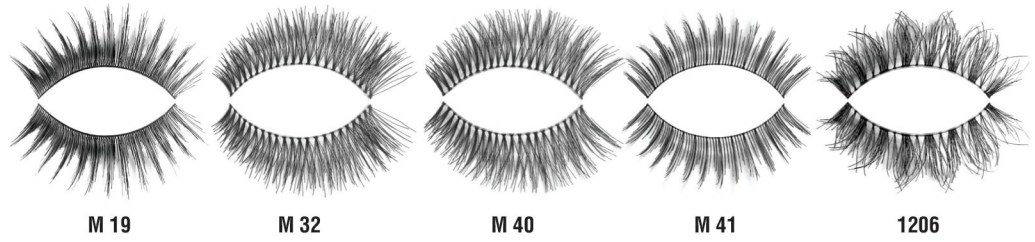



## Human or Synthetic Lashes

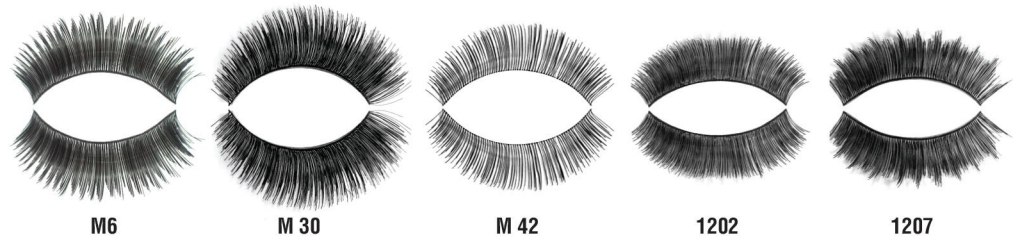
### Natural Lashes



### Long Lashes



### Volume Lashes



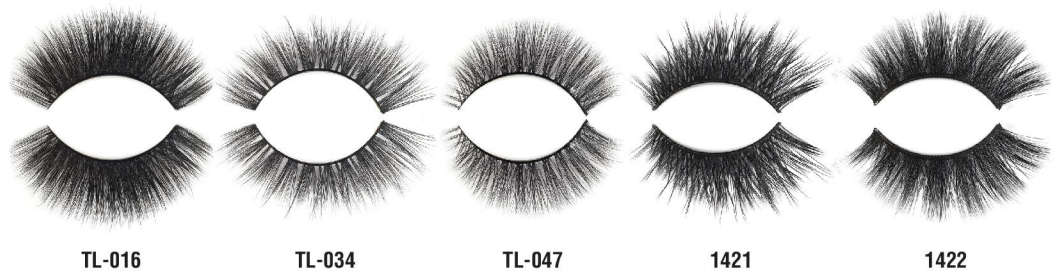
## Mellow Lashes

### Elegant Lashes



## 3D Lashes

### 3D Mink Lashes



# Eyelash Tray

Professional Quality



Various forms of eyelash trays are provided.

## New Tray



## Small Trays





## 1 Pair Trays



ET-06



ET-07



ET-08



ET-09



ET-10



ET-11



ET-13



ET-14



ET-15



ET-16



ET-18



ET-19

## Other Trays



ET-17

• ACRYLIC TYPE



• 2 PAIR TRAY

ET-12



5 PAIR TRAY •

ET-21

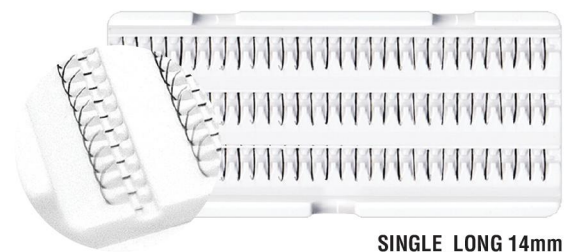
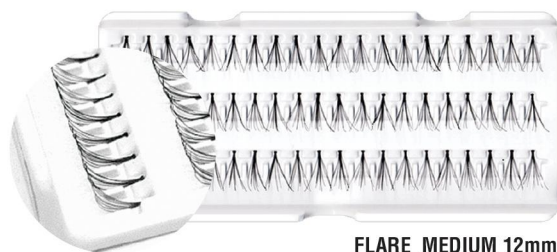
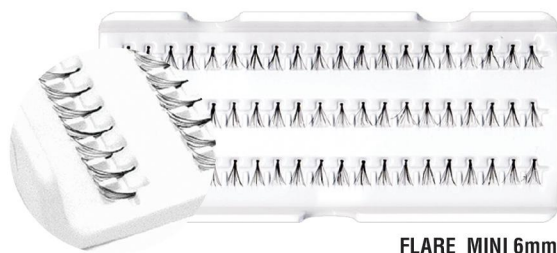
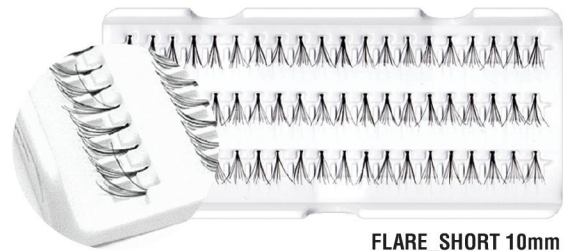
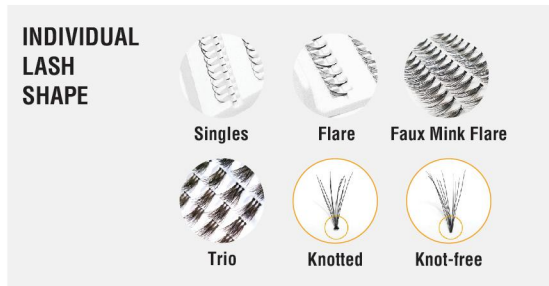
ET-20

# Individual

Professional Quality



Experience the uniqueness of eyelashes, it is silk-soft and comfortable. It is so natural and so lightweight it's almost like nothing at all. Available in various sizes of your choice in professional quality.



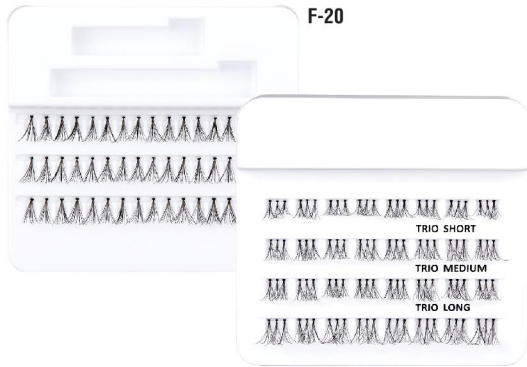
**TRIO\_10ply ULTRA BLACK**

- **96 POINT P.CARD TRIO FLARE**
- Size : 100 x 15 x 95 mm
- Q'TY / CT : 576PCS / CT
- CT Size : 630 x 405 x 430 mm

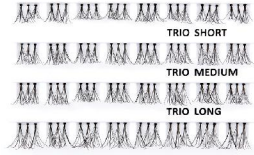


**TRIO\_5ply BLACK**

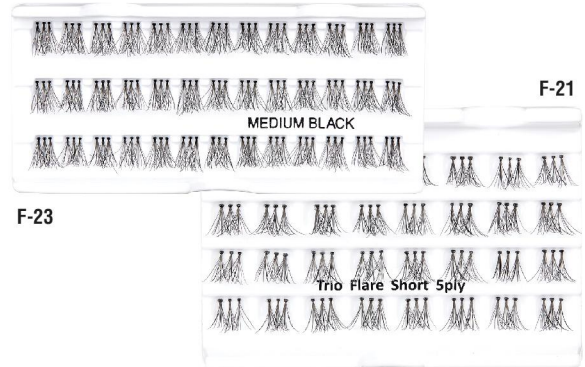
# Flare / Single



F-20

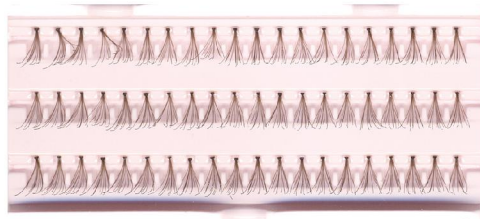


F-22



F-21

F-23



- **60 POINT (20 point x 3)**
  - Size : 107 x 10 x 50 mm
  - Q'TY / CT : 3,000PCS / CT
  - CT Size : 720 x 530 x 575 mm

- **100 POINT (20 point x 5)**
  - Size : 108 x 12 x 73 mm

- **56 POINT (14 point x 4)**
  - Size : 82 x 15 x 57 mm
  - Q'TY / CT : 3,000PCS / CT
  - CT Size : 720 x 530 x 575 mm



- **100 POINT P.CARD**
  - Size : 125 x 15 x 118 mm



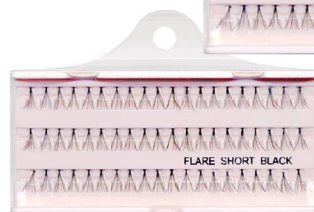
- **56 POINT BULK**
  - Size : 82 x 10 x 57 mm
  - Q'TY / CT : 3,000PCS / CT
  - CT Size : 720 x 530 x 575 mm

- **56 POINT P.CARD**
  - Size : 100 x 15 x 95 mm
  - Q'TY / CT : 576PCS / CT
  - CT Size : 630 x 405 x 430 mm

- **60 POINT P.BOX**
  - Size : 112 x 14 x 72 mm



- **60 POINT BULK**
  - Size : 107 x 12 x 50 mm
  - Q'TY / CT : 3,000PCS / CT
  - CT Size : 720 x 530 x 575 mm



- **60 POINT ACRYLIC**
  - Size : 105 x 13 x 70 mm
  - Q'TY / CT : 1,200PCS / CT
  - CT Size : 670 x 580 x 385 mm

# Extension Eyelashes

Professional Quality



Our extension Eyelashes are soft and comfortable to use. Various design can offer you many different looks with high professional quality. We are manufacturing Silk, Faux mink, Flat, Matte, Easy, Fan, Double Layer, Camelia with various curl and length. Our extension eyelashes are designed for single Lid Eye, Round Eye, Close Set Eye, Hooded Eye and Almond eye. We can offer the sample to test.



## Silk Lashes



Lightweight and soft Lashes, comes with different length that suits for any extension techniques.

Lashes made from Korean PBT.

**Curl** J, B, C, CC, D, D+, L  
**Length** 6 mm -15 mm  
**Thickness** 0.05, 0.07, 0.10, 0.12, 0.15, 0.18, 0.20

## Camellia Lash



Camellia lash comes in one line with 3 combined length in each lines ready for artist to create the perfect and natural Volume fans.

**Curl** J, B, C, D  
**Length** 6-8mm, 7-9mm, 8-10mm, 9-11mm, 10-12mm, 11-13mm, 12-14mm  
**Thickness** 0.07

## Flat Matte Lashes



Flat Matte lashes create a thicker looking lash less weight. The wide base gives an impressive eyeliner effect along the lash line by filling and correcting the gap between natural lashes.

Lashes made from Korean PBT.

**Curl** J, B, C, D  
**Length** 6 mm -15 mm  
**Thickness** 0.07, 0.10, 0.15, 0.18, 0.20

## Double Layer Lash



There are two different curls mixed in one row, they are perfect to create dramatic looking fans. Each row has 2 different curl, giving lashes a fluffy dramatic look.

**Curl** C, D  
**Length** 6 mm -15 mm  
**Thickness** 0.07

## Easy Fan



Volume extension, also know as "Russian Volume" allows you to apply multiple extension lashes to one natural lash on one time. Easy fanning technology will allow you to make fans more easy and fast on the tape line. They are very lightweight, extra fine and consistent quality.

**Curl** C, D  
**Length** 6 mm -15 mm  
**Thickness** 0.05, 0.07

## YY and VV Shape Lashes



Double lash application for extra volume and fullness Y and V shape help you work faster and create dramatic look for your clients.

**Curl** C  
**Length** 8 mm -14 mm  
**Thickness** 0.05, 0.07

## Color Lash & Two Tone



20 colors. Rainbow & Two tone (red, green, purple, blue)

**Curl** J, C, D  
**Length** 6 mm -15 mm  
**Thickness** 0.05, 0.07, 0.10, 0.15

## Pre-Made Fan 3d, 5d



Let you create blooming dramatic volume extension.

**Curl** C  
**Length** 9 mm -13 mm  
**Thickness** 0.05, 0.07

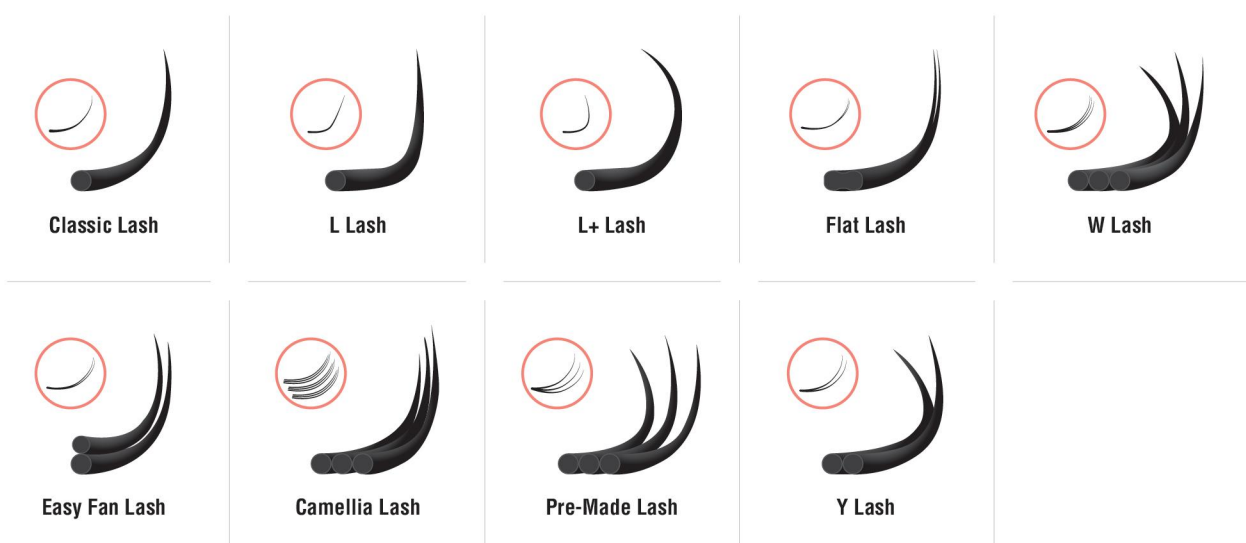
# Extension Eyelashes Detail

Professional Quality



A wide variety of lashes are available to create different look with professional quality.

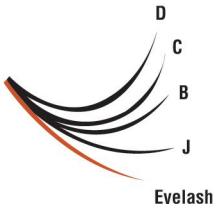
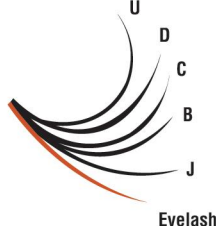
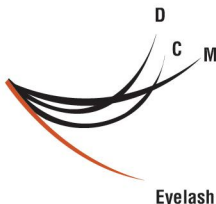
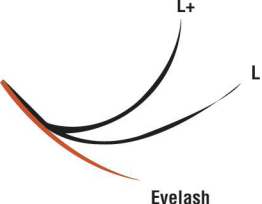
## Eyelashes












## Color Extension Eyelashes


















## Curls

 <p><b>Natural</b> B, J Curl</p>	 <p><b>Dramatic</b> C, D, U Curl</p>	 <p><b>Straight-Up</b> M Curl</p>	 <p><b>Lift Upward</b> L, L+ Curl</p>
---	---	---	--

## Thickness

 <p>0.05mm</p>	 <p>0.07mm</p>	 <p>0.10mm</p>	 <p>0.12mm</p>	 <p>0.15mm</p>
 <p>0.18mm</p>	 <p>0.20mm</p>	 <p>0.25mm</p>	 <p>0.30mm</p>	

## Length

 <p>4mm</p>	 <p>5mm</p>	 <p>6mm</p>	 <p>7mm</p>	 <p>8mm</p>	 <p>9mm</p>	 <p>10mm</p>	 <p>11mm</p>
 <p>12mm</p>	 <p>13mm</p>	 <p>14mm</p>	 <p>15mm</p>	 <p>16mm</p>	 <p>17mm</p>	 <p>18mm</p>	

# Extension Glue, Remover & Pre-Treatment

Professional Quality

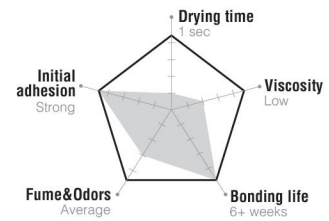
Choosing the right lash extension adhesive is one of the most important consideration when applying extension of eyelashes. Below we would like to introduce our glue and products.

## Extension Glue



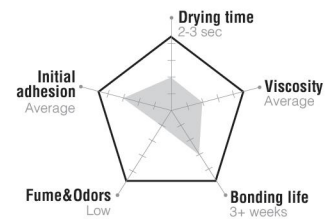
### STRONG TYPE

Fast drying glue with drying time 1 second. Perfect to use for advanced level eyelash volume artists.



### SENSITIVE TYPE

Low level or odors and irritation type with drying time is 2-3 sec.



## Pre-Treatment



### PROTEIN REMOVER

Protein remover or Cleanser helps to clean the eyelashes properly by removing any grease of makeup and natural oils.



### PRIMER

Primer adds elasticity to the adhesive, polymerizes the glue to maximize your retention.

## Removers



### GEL REMOVER

Gel type remover help to remove eyelash extensions quickly and easily, with a slightly runnier texture compared to Cream remover.



### CREAM REMOVER

Cream type remover with the creamy texture keeps the remover out of the client's eyes.



# Extension Glue Packaging

Professional Quality



Various bottle and cap are available.

## Bottle



**W-1**  
3ml / 5ml



**W-2**  
5ml / 10ml



**W-3**  
5ml / 10ml



**W-4**  
5ml / 10ml



**B-1**  
3ml / 5ml



**B-2**  
5ml / 10ml



**B-3**  
5ml / 10ml



**B-4**  
5ml / 10ml

## Cap



**C-1**



**C-2**



**C-3**



**C-4**



**C-5**



**C-6**



**C-7**



**C-8**



**D-1**



**D-2**



**D-3**



**D-4**



**D-5**



**P-1**



**P-2**



**P-3**



**P-4**



**P-5**



**P-6**

# Eyelash Glue

Professional Quality



This high-quality product dried in a seconds and can also be easily removed.  
Various forms of packages are provided.

We provide Acrylic Glue (long-lasting) and Latex Glue (Easy peel-off)



**FLAT TUBE 1g**

Black / Clear / White



**TUBE 1g**

Black / Clear / White



**GLASS 1g**

Black / Clear / White



**ROUND (Brush-On) 3g**

Black / Clear / White



**INDIVIDUAL 4g**

Black / Clear / White



• **CLAMSHELL (1g x 10pcs)**

- Size : 90 x 13 x 180 mm



• **CLAMSHELL (1g x 3pcs)**

- Size : 60 x 13 x 125 mm



**CYINDER CAP (Brush-On) 5g**

Black / Clear / White



• **BLISTER CARD (5g)**

- Size : 65 x 140 mm



**REMOVER 20ml**



**TUBE 7g**

Black / Clear / White

# Nail Glue

Professional Quality

You can use this high-quality product to stick fake nails or nail materials. Various forms of packages are provided.

White is regular formula while Pink is fast-drying formula.

**NAIL GLUE P.BOX (10g) •**

- Brush-On
- Size : 50 x 20 x 145 mm



- **ONE-TOUCH GLUE BLISTER (5g)**
- Size : 64 x 140mm



- **NAIL GLUE 24 DISPLAY (3g)**
- Size : 115 x 190 x 150mm



- **NAIL GLUE 12 CARD (3g)**
- Size : 257 x 362mm



**1g / 2g NAIL GLUE**  
Clear, Pink Gel



**3g / 5g NAIL GLUE**  
Clear, Pink Gel



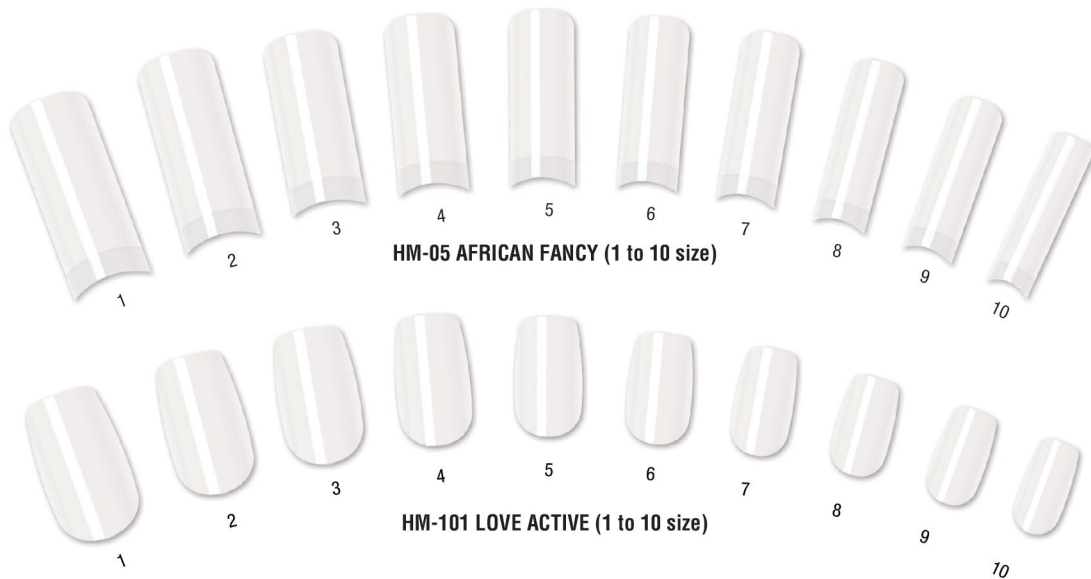
**7g / 10g NAIL GLUE (Brush-On)**  
Clear, Pink Gel

# Nail Tips

Professional Quality



High-quality nail styles are provided in various colors. 10 different size tips can be extended by gel and acrylic and can be completed by decorations and nail art. Various forms of packages are provided.



- **100 NAILS CLAMSHELL**
  - Size : 97 x 15 x 190 mm
  - Q'TY / CT : 576PCS / CT
  - CT Size : 792 x 400 x 580 mm



- **50 NAILS CLAMSHELL**
  - Size : 70 x 30 x 95 mm



- **CARD NAILS (24ht)**
  - Size : 264 x 384 mm
  - Q'TY / CT : 50PCS / CT
  - CT Size : 555 x 535 x 245 mm

- **500 NAILS ACRYLIC CASE**
  - Size : 205 x 120 x 32 mm
  - Q'TY / CT : 108PCS / CT
  - CT Size : 675 x 435 x 425 mm



- **70/100 NAILS ACRYLIC**
  - Size : 90 x 20 x 152 mm
  - Q'TY / CT : 288PCS / CT
  - CT Size : 535 x 420 x 500 mm
- **200/250 NAILS ACRYLIC**
  - Size :
    - C - 173 x 103 x 30 mm
    - D - 176 x 103 x 30 mm
  - Q'TY / CT : 144PCS / CT
  - CT Size : 580 x 450 x 510 mm

# Nail Shapes



**HM-01**  
LONG  
CURVE



**HM-02**  
CURVE



**HM-03**  
FANCY  
CURVE



**HM-04**  
FANCY



**HM-05**  
AFRICAN  
FANCY



**HM-06**  
FANCY  
SQUARE



**HM-07**  
SHORT  
SQUARE



**HM-08**  
SQUARE



**HM-09**  
ROYAL  
ACTIVE



**HM-10**  
LOVE  
ACTIVE



**HM-11**  
AMERICAN  
FRENCH



**HM-12**  
FRENCH  
OVERLAP



**HM-13**  
OVAL



**HM-14**  
LOVE OVAL



**HM-15**  
NATURAL



**HM-16**  
CLASSIC



**HM-17**  
SHORTY



**HM-18**  
EURO



**HM-19**  
R-40



**HM-20**  
TOE-1



**HM-21**  
TOE-2



**HM-22**  
PETITE  
ACTIVE



**HM-23**  
NOBLE  
FANCY



**HM-24**  
WIDE  
CURVE




**HM-25**  
FRENCH  
ACTIVE




**HM-27**  
SQUARE-2(II)

## COLOR GUIDE


HM-05  
AFRICAN  
FANCY



WHITE



NATURAL



CLEAR

# French Tips

Professional Quality



You can select various natural colors. You can easily complete natural, full-cover type nails by using nail glue. You can use it at salons or at home and can complete your own style through decorations.



- **50 NAILS CLAMSHELL**
  - Size : 70 x 30 x 95 mm
  - Q'TY / CT : 144PCS / CT
  - CT Size : 580 x 450 x 510 mm



- **D ACRYLIC**
  - Size : 48 x 18 x 136 mm
  - Q'TY / CT : 384PCS / CT
  - CT Size : 460 x 440 x 325 mm



- **HP ACRYLIC**
  - Size : 48 x 20 x 138 mm
  - Q'TY / CT : 288PCS / CT
  - CT Size : 460 x 440 x 325 mm



- **24 NAILS MINI P.BOX**
  - Size : 72 x 90 x 15 mm
  - Q'TY / CT : 288PCS / CT
  - CT Size : 655 x 497 x 350 mm





- **20 NAILS CLAMSHELL**
  - Size : 45 x 15 x 137 mm
  - Q'TY / CT : 384PCS / CT
  - CT Size : 595 x 305 x 315 mm
- **24 NAILS CLAMSHELL**
  - Size : 58 x 15 x 148 mm
  - Q'TY / CT : 288PCS / CT
  - CT Size : 460 x 440 x 325 mm

- **24 NAILS CLAMSHELL**
  - Size : 68 x 15 x 130 mm -
  - Q'TY / CT : 384PCS / CT -
  - CT Size : 460 x 440 x 325 mm -
- **40/48 NAILS CLAMSHELL**
  - Size : 86 x 25 x 150 mm -
  - Q'TY / CT : 288PCS / CT -
  - CT Size : 490 x 460 x 420 mm -



- **STYLISH 24 NAILS P.BOX**
  - Size : 70 x 10 x 117 mm
- **ROUND 24 NAILS P.BOX (HM-22/25)**
  - Size : 78 x 13 x 130 mm
- **24 NAILS KIT P.BOX**
  - Size : 75 x 23 x 137 mm
  - Q'TY / CT : 288PCS / CT
  - CT Size : 655 x 497 x 350 mm



# Glitter & Color

Professional Quality



You can select various natural colors. 10 different size tips can be extended by gel and acrylic. Individual style and pattern can be completed by adding decorations and designs. Various forms of packages are provided.

## 100 NAILS ACRYLIC •

- Size : 90 x 20 x 152 mm
- Q'TY / CT : 288PCS / CT
- CT Size : 535 x 420 x 500 mm

## • 50 NAILS CLAMSHELL

- Size : 82 x 152 x 20 mm



## HP ACRYLIC •

- Size : 48 x 20 x 138 mm
- Q'TY / CT : 288PCS / CT
- CT Size : 460 x 440 x 325 mm

## • 50 NAILS CLAMSHELL

- Size : 70 x 30 x 95 mm





# Metallic

Professional Quality



You can select various natural colors. 10 different size tips can be extended by gel and acrylic. Individual style and pattern can be completed by adding decorations and designs. Various forms of packages are provided.



- **NAIL & EYELASH KIT CLAMSHELL**
- Contents :  
1 Pair Lash, 24 Nail Tips, Nail Glue
- Size : 140 x 198 x 10 mm



**TMN-01**  
SKY BLUE



**TMN-02**  
LIGHT PURPLE



**TMN-03**  
LIGHT PINK



**TMN-04**  
PURPLE



**TMN-05**  
PINK



**TMN-06**  
SILVER



**TMN-07**  
LIGHT BLUE



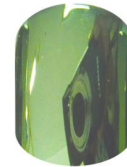
**TMN-08**  
GOLD



**TMN-09**  
RED



**TMN-10**  
BLUE



**TMN-11**  
LIGHT GREEN



**TMN-12**  
GREEN



**ICE-01**  
GOLD



**ICE-02**  
SILVER



**ICE-03**  
LIGHT PINK



**ICE-04**  
RED



**ICE-05**  
AQUA BLUE



**ICE-06**  
BLUE



**ICE-07**  
GREEN



**CYB-01**  
GOLD



**CYB-02**  
SILVER



**CYB-03**  
LIGHT PINK



**CYB-04**  
RED



**CYB-05**  
PURPLE



**CYB-06**  
AQUA BLUE



**CYB-07**  
BLUE



**CYB-08**  
GREEN

# Airbrushed

Professional Quality



You can quickly and easily express beautiful nails through professional and detailed handmade designs. You can select various natural designs. 10 different size tips can be extended by gel and acrylic. Individual style and pattern can be completed by adding decorations and designs. Various forms of packages are provided.



- **100 NAILS ACRYLIC**
- Size : 90 x 20 x 152 mm
- Q'TY / CT : 288PCS / CT
- CT Size : 535 x 420 x 500 mm



HSS 5031 HSS 5032 HSS 5033 HSS 5034 HSS 5035



HSS 5036 HSS 5037 HSS 5038 HSS 5040 HSS 5047



HSS 5091 HSS 5092 HSS 5093 HSS 5094 HSS 5095



HBS 183 HBS 187 HBS 193 HBS 194 HBS 196



HSS 5101 HSS 5102 HSS 5103 HSS 5104 HSS 5105



HBS 197 HBS 199 HBS 201 HBS 203 HBS 208



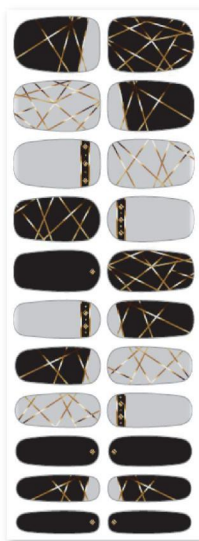
HSS 5111 HSS 5112 HSS 5113 HSS 5114 HSS 5115

# Gel Nail Sticker

Professional Quality



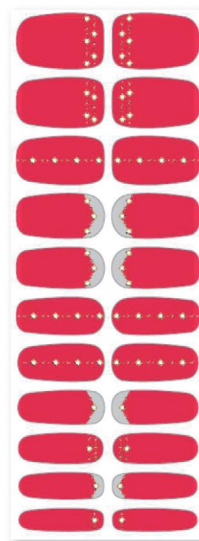
It gives you the extreme shine like real Gel that you have never seen before our exclusive technology has developed. It is made of real Gel ingredients so that it shines like real Gel Nail. Our Nail sticker has no scratch, no damage and long – lasting shininess. Also, Our Gel Nail sticker is Waterproof and long-lasting for using.



**N47**  
BLACK  
CAT



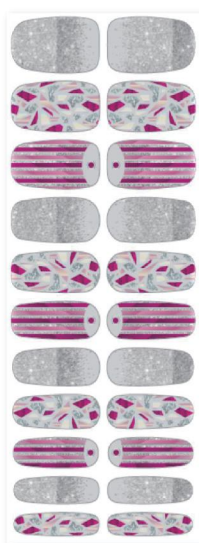
**N51**  
COTTON  
CANDY



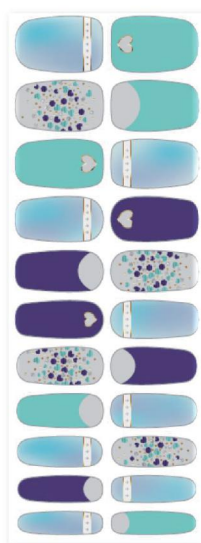
**N52**  
RED  
DRESS



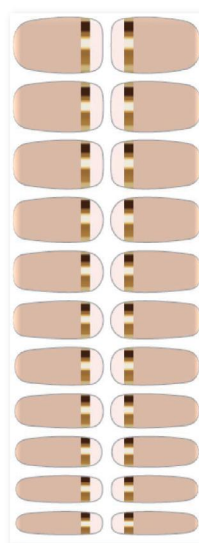
**N53**  
PINK  
LEOPARD



**N57**  
PINK  
STRIPE



**N58**  
HEART  
HEART



**N62**  
GOLDEN  
LINE



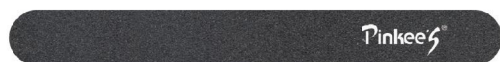
**N63**  
GREEN  
LEAF

# Nail Files

Professional Quality



Files are available from 80~400 count grits.  
Give natural, soft finishing touches to the edges after filing nails.



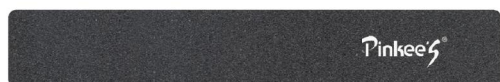
7" BLACK 100/180



7" BLACK(BANANA) 100/180



7" BLACK(HALF MOON) 100/180



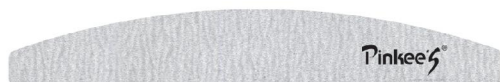
7" BLACK(SQUARE) 100/180



7" ZEBRA 100/180



7" ZEBRA(BANANA) 100/180



7" ZEBRA(HALF MOON) 100/180



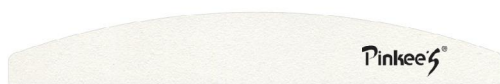
7" ZEBRA(SQUARE) 100/180



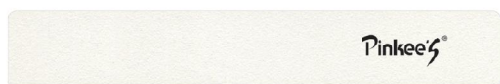
7" WHITE 100/180



7" WHITE(BANANA) 100/180



7" WHITE(HALF MOON) 100/180



7" WHITE(SQUARE) 100/180



ACRYLIC DISPLAY (48pcs) •  
- Size : 105 x 85 x 205 mm

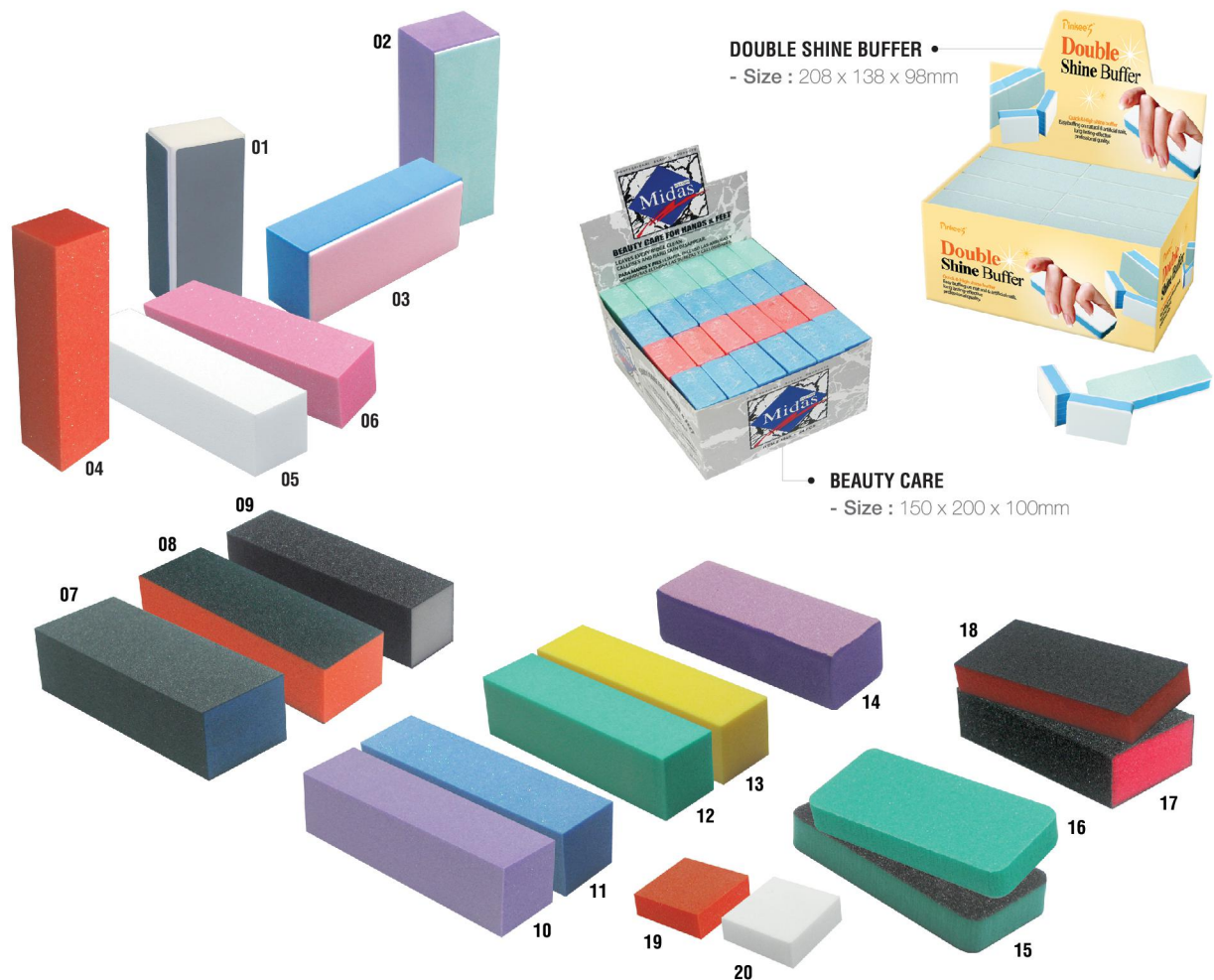


• FILE / BUFFER DISPLAY (48pcs)  
- Size : 80 x 47 x 180 mm

# Sanding Block

Professional Quality

Sanding block for nail art trims the nail surface before using UV gel and acrylic. You can use it anywhere, anytime as it is compact and light and can be kept in your cosmetic purse.



**01. 4-WAY BUFFER**

- Size : 37 x 95 x 26 mm

**04. ORANGE SANDING BLOCK W/GLITTER**

- Size : 25 x 97 x 25 mm

**07. 4-WAY BLUE SANDING BLOCK**

- Size : 35 x 95 x 25 mm

**10. PURPLE SANDING BLOCK**

- Size : 25 x 97 x 25 mm

**13. YELLOW SANDING BLOCK W/Glitter**

- Size : 25 x 97 x 25 mm

**16. GREEN SANDING BLOCK**

- Size : 33 x 88 x 12 mm

**19. MINI ORANGE SANDING BLOCK**

- Size : 35 x 32 x 12 mm

**02. 2-WAY BUFFER**

- Size : 36 x 90 x 26 mm

**05. WHITE SANDING BLOCK**

- Size : 25 x 97 x 25 mm

**08. 3-WAY ORANGE SANDING BLOCK**

- Size : 35 x 95 x 25 mm

**11. BLUE SANDING BLOCK W/Glitter**

- Size : 25 x 97 x 25 mm

**14. PURPLE SANDING BLOCK**

- Size : 35 x 95 x 25 mm

**17. 4-WAY RED SANDING BLOCK**

- Size : 50 x 90 x 25 mm

**20. MINI WHITE SANDING BLOCK**

- Size : 35 x 32 x 12 mm

**03. 3-WAY BUFFER**

- Size : 35 x 89 x 27 mm

**06. PINK SANDING BLOCK W/GLITTER**

- Size : 25 x 97 x 25 mm

**09. WHITE SANDING BLOCK**

- Size : 25 x 97 x 25 mm

**12. GREEN SANDING BLOCK**

- Size : 25 x 97 x 25 mm

**15. 2-WAY GREEN SANDING BLOCK**

- Size : 33 x 88 x 12 mm

**18. MINI 2-WAY ORANGE SANDING BLOCK**

- Size : 33 x 77 x 12 mm

# Sponges

Professional Quality



We offer various make-up sponges for smooth and easy application of make-up. Various shapes and sizes are available with adaptable density and customizable design and colors.

- **3 LAYERED SPONGES**  
- Non-latex / NBR / SBR



- **FANTASY BLANDING SPONGES**  
- Non-latex / NBR / SBR



- **BLENDER SPONGE**  
- Non-latex / NBR / SBR



- **MINI BLENDING SPONGE**  
- Non-latex / NBR / SBR



- **BLENDING WEDGE**  
- Non-latex / NBR / SBR



# Notes



Harry & Son's

**HARRY AND SON'S INC.**

1208-Ho, 301-Dong 397 Seokcheon-Ro, Bucheon City, Gyeonggi-do, South Korea (14449)

☎ +82-32-624-2801~5

📞 +82-32-624-2800

✉ pinkees@pinkees.com